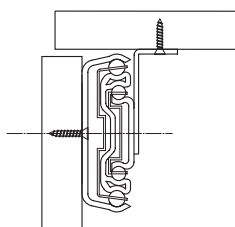
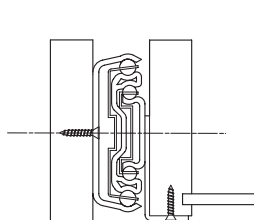
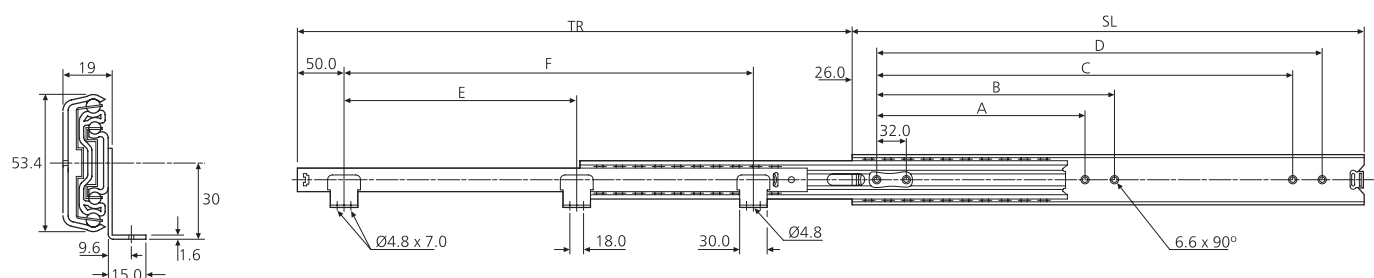


- Load rating up to 60kg
- 100% + extension
- 19mm slide thickness
- Brackets on drawer member for bottom mounting
- Hold-in



| 5517 | mm | | | | | | | |
|-------------|-----|-------|-----|-----|-----|-----|-----|-----|
| | SL | TR | A | B | C | D | E | F |
| DZ5517-6030 | 300 | 325.0 | - | - | 224 | 256 | - | 190 |
| DZ5517-6035 | 350 | 374.2 | - | - | 224 | 256 | - | 240 |
| DZ5517-6040 | 400 | 436.1 | 160 | 192 | 320 | 352 | - | 290 |
| DZ5517-6045 | 450 | 498.0 | 160 | 192 | 320 | 352 | - | 340 |
| DZ5517-6050 | 500 | 547.2 | 192 | 224 | 416 | 448 | - | 390 |
| DZ5517-6055 | 550 | 596.4 | - | 224 | 448 | 480 | 250 | 440 |
| DZ5517-6060 | 600 | 658.3 | 256 | 288 | 480 | 512 | 250 | 490 |
| DZ5517-6065 | 650 | 707.5 | 256 | 288 | 544 | 576 | 250 | 540 |
| DZ5517-6070 | 700 | 769.4 | 288 | 416 | 576 | 608 | 250 | 590 |

Notes:

- Fixing recommendation: 4mm wood screw/
6mm Euro screw